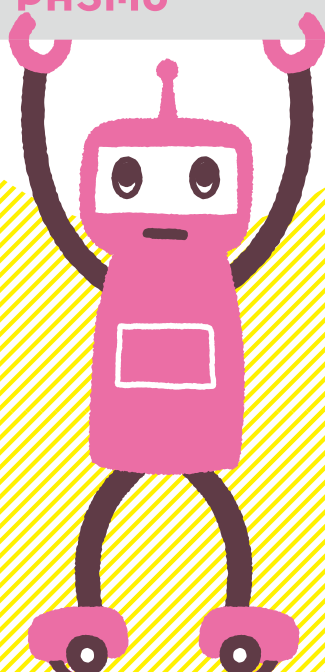


# You can use the same card for the train and the bus!

## Guide to using the PASMO IC card



No more hunting for loose change!  
As long as the card has value stored in it, you can use it over and over again

PASMO works smoothly even if you have to change train or bus, or travel too far by mistake.

Make purchases in stores and from automatic vending machines just by touching the card to the reader!



# How to use your PASMO card .....

Use the same card to travel on private railways, subways, JR rail lines, and buses .....

## STEP

### 1 Buying a PASMO card

You can buy a PASMO card at a railway station or bus station, etc.

When buying your PASMO card from a station ticket vending machine, you can choose from several different stored value denominations: ¥1,000, ¥2,000, ¥3,000, ¥4,000, ¥5,000 and ¥10,000.

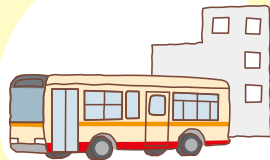
\*A ¥500 deposit is included in the purchase price. (The deposit will be refunded if you return the card when you no longer wish to use it)



Station ticket vending machine



Commuter pass sales desk



Bus station

## STEP

### 2 Storing value in your PASMO card

#### Topping up at a station .....

You can add value to your PASMO card in ¥1,000 units at station ticket vending machines and topping-up machines.

\*The amount of value that can be added at one go may vary depending on the service provider.

\*The maximum amount of value that can be stored in the card is ¥20,000.

\*If you add too much value by mistake, you can get a refund (with no handling fee) at the station where you topped up the card, as long as you ask for the refund on the same day, and as long as you have not used the card after topping it up.

#### Topping up on a bus .....

You can top up your PASMO card in units of ¥1,000 on a bus. Please ask the bus driver to help you.

\*You cannot top up your PASMO card on a bus if you already have a balance of ¥10,001 or more stored in the card.

#### Topping up in a store .....

You can also top up your PASMO card at some stores that accept public transport IC cards such as PASMO and Suica. For more details, please check with the individual store.

Once you have stored value in your PASMO card, you can use the card again and again!



## STEP

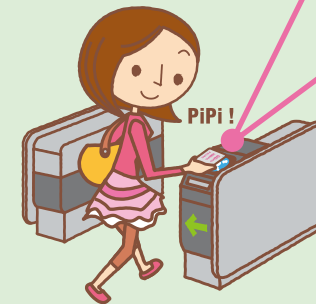
### 3 Using your PASMO card to travel on public transport

#### How to use your PASMO card to travel by train ..... [Using your PASMO card at the ticket gate]

When entering or leaving a station, be sure to touch your PASMO card firmly onto the reader (the shiny blue panel) in such a way that the card lies flat against the reader.

\*If you fail to touch the card firmly enough against the reader, you may be charged the incorrect fare for your journey, and you may not be able to use the card next time you travel.

If the balance remaining in your card is too low to allow you to leave the station, please use the automatic fare adjustment machine.



Touch the card firmly against the reader!



The reader cannot read the PASMO card if the card is only held near the reader without actually touching it. If the reader cannot read the card properly, it will emit a "Pi Pi Pi" noise, and the reader panel will flash red to warn you. If this happens, please touch your card against the reader again.

#### Using your PASMO card to travel by bus .....

##### [Using your PASMO card on a bus (Representative example)]

When using your PASMO card to travel by bus, if the bus requires payment before riding, touch your card on the reader when you get on the bus; if the bus requires payment after riding, touch your card on the reader both when you get on the bus and when you get off the bus.

##### Using your card on a bus that requires payment before riding (i.e. where a fixed fare must be paid when boarding the bus)



Getting on the bus

Touch your card against the reader when you get on the bus (the fare will be deducted from your card)

Getting off the bus



You don't need to touch the card on again when you get off the bus.

##### Using your card on a bus that requires payment after riding (i.e. where the fare payable depends on how far you have traveled)



Getting on the bus

Touch your card against the reader when you get on the bus

Getting off the bus



Touch your card against the reader again when you get off the bus (the fare will be deducted from your card)

\*How you get on a bus (through a door at the front, or through a door halfway along), and the method of paying the fare, may vary depending on the bus service operator, the zone of travel, and the route taken. For more details, please contact the bus company that operates the bus you wish to take.

# Buying things with PASMO

## [Using PASMO in stores]

### How to pay

At the checkout desk, tell the assistant that you want to pay with PASMO

Check the amount shown on the card reader, and then touch your PASMO card firmly on the card reader.  
The card can still be read even if it is inside a protective card wallet/holder.



Store card readers

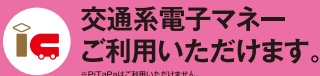
When you hear a “pi pi” sound, the payment is completed. Be sure to check the balance remaining in the card after payment, which will be displayed on the card reader.

\*Some stores do not accept payment by PASMO card in combination with cash payment. Please check with the individual store.

Make purchases just by touching your card to the reader!



### Look out for this sign!



The PASMO logo is displayed on those stores, automatic vending machines, car parks (parking lots), coin lockers etc. that accept payment by PASMO card.

## [Using PASMO with automatic vending machines]

When you have selected the item you wish to purchase, touch your PASMO card firmly on the card reader.

\*When making purchases from vending machines, the PASMO card cannot be used together with cash payment.



Automatic vending machine card readers



You can use your PASMO card with rail lines, buses and stores where this logo is displayed.

For more information, visit the PASMO website  
[www.pasmo.co.jp](http://www.pasmo.co.jp)

PASMO

Search

